



ALL NEW PRO 2020

# S9000

## COMBINE HARVESTER

### SPECIFICATION

<b>Cutter-bar</b>			
Width	mm	3,150	
<b>Threshing System</b>			
Threshing dimension	mm	Threshing rotor diameter 559	
	mm	Threshing length 1,817	
Rotor speed adjustment	Pulley		
Rice unloading system	Hydraulic motor control		
Track system	Special steel track for tough and wet condition		
Track link assembly	link	48	
<b>Cleaning System</b>			
Cleaning sieve	Sieve especially designed for South East Asia		
Air blower	Air blower and oscillating screen		
<b>Rice storage tank</b>			
Tank capacity	kg	2,500	
<b>Transmission</b>			
Reduction Gear	(Ratio 18 : 1)	12 HD	
Hydraulic pump (Tandem)	cc/cycle	89	
Hydraulic motor	cc/cycle	89	
Operating speed	km/hr	4	
Maximum speed	km/hr	12	
<b>Engine</b>			
Manufacturer	ISUZU	MITSUBISHI	HINO
Model	6HK1	6M61	J08C
Maximum power (hp)	261	225	260 with TURBO
Number of cylinders	6 cylinders, 4	6 cylinders, 4	6 cylinders, 4
	water cooled, direct injection		
Displacement (l)	7.79	7.79	7.79
Supercharging system (Ratio 18 :	Turbocharger	Turbocharger	Turbocharger
Max engine speed (rpm)	2,000	2,000	2,000
Fuel tank capacity (l)	150	150	150
<b>Dimensions</b>			
Height (when folded)	mm	3,013	
Width	mm	3,800	
Length	mm	6,900	
<b>Weight</b>			
Harvester weight	kg	9,500	



## TAMCO COMBINE HARVESTER ALL NEW PRO 2020

# S9000



### 9 PRO SYSTEMS – SUPER-EFFICIENT RICE HARVESTER, BUILT WITH UNCOMPROMISING PERFORMANCE

The All New Pro 2020 S9000 is meticulously designed. From its individual parts, to the overall system function, the result is an impressive blend of performance and efficiency. The outcome is a brand new, high-quality rice harvester combine, that will satisfy all of your rice harvesting needs.

**That's ALL NEW PRO 2020**

CONTACT US

MR.SETT AUNG

✉ sett-aung@itochu.com.mm

☎ 95-9-5418115

MR.AUNG MYINT MYAT

✉ aungmyintmyat@itochu.com.mm

☎ 95-9-255 844 633

MR.AUNG THURA MYINT

✉ aungthura@itochu.com.mm

☎ 95-9-7725 63220

Tamco Trading International Co.,Ltd.

95-1-9345 592, 593, 594, 595, 596, 597 Fax.95-1-9345 598

Unit-16, 18, 20, Level-16, HAGL Myanmar Centre Tower-2, No 192, Kaba Aye Pagoda Road, Bahan Township, Yangon, Myanmar

f Tamco Myanmar



YouTube Tamco Live



# S9000



**9 PRO SYSTEMS – SUPER-EFFICIENT RICE HARVESTER, BUILT WITH UNCOMPROMISING PERFORMANCE**



## SUPER TORNADO PRO

(Harvester)

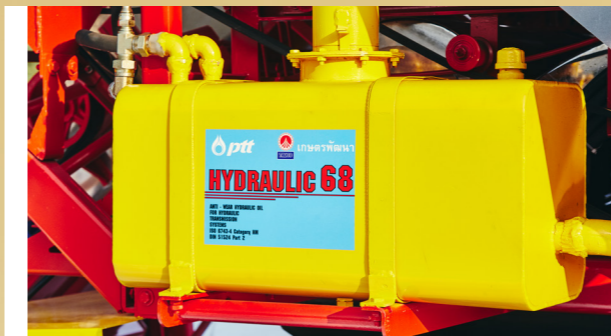
The Super Tornado Pro is versatile enough to handle **Every paddy condition**. Regardless of whether the rice stalks are straight or bent, the Super Tornado Pro is powerful and extremely durable.



## ULTRA PURE SYSTEM PRO

(Threshing system)

The Ultra Pure System Pro can thresh cleanly without contamination **In all types of jobs** to help increase throughput and minimize loss.



## HEAVY HYDRAULIC PRO

(Hydraulic system)

The Heavy Hydraulic Pro is a remarkably efficient hydraulic system for transferring power using high quality pumps and motors. Every part has been carefully selected to build a sturdy and long-lasting system.



## ENGINE POWER PRO

(Engine system)

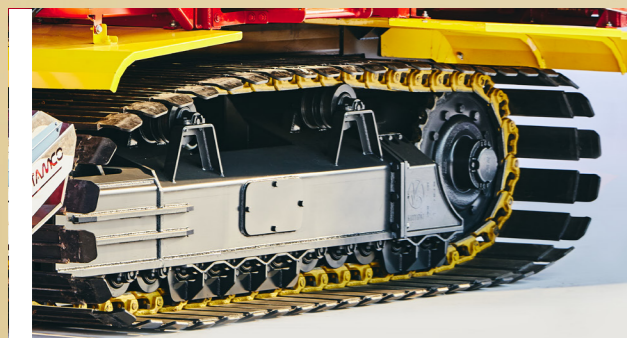
The **Engine Power Pro** consists of a powerful ISUZU engine with 261 horsepower **that is not only incredibly responsive, but also fuel efficient**. Together with the Turbo Super Hurricane Mark II, the Engine Power Pro can handle any load.



## SUPER FEEDER PRO

(Feed system and storage tank)

The dependable Super Feeder Pro transfers rice to the storage tank with no delay. The increased tank capacity allows the Super Feeder Pro to work harder and longer for you without needing a break.



## X-FRAME PRO

(Frame)

Manufactured using high-precision machinery, the X-Frame Pro can withstand high torque from any direction. There is no job too hard for the X-Frame Pro with the new 12 HD gearbox.



## ELECTRIC PRO

(Electric system)

Better illumination provided by the Electric Pro system comes with the convenience of increased safety and ease of maintenance.



## ECO DRIVE PRO

(Power and Drive system)

Responsive, precise and accurate with every horsepower, the Eco Drive Pro uses the Hachi pulley to minimize loss. The installed power transmission belt and **top grade bearings, together with a speed reducer system** provide tremendous fuel savings.



## ERGO DRIVE PRO

(Control system)

Light, accurate, and easy to control, the Ergo Drive Pro responds to your every command so you can get the most out of the system.